



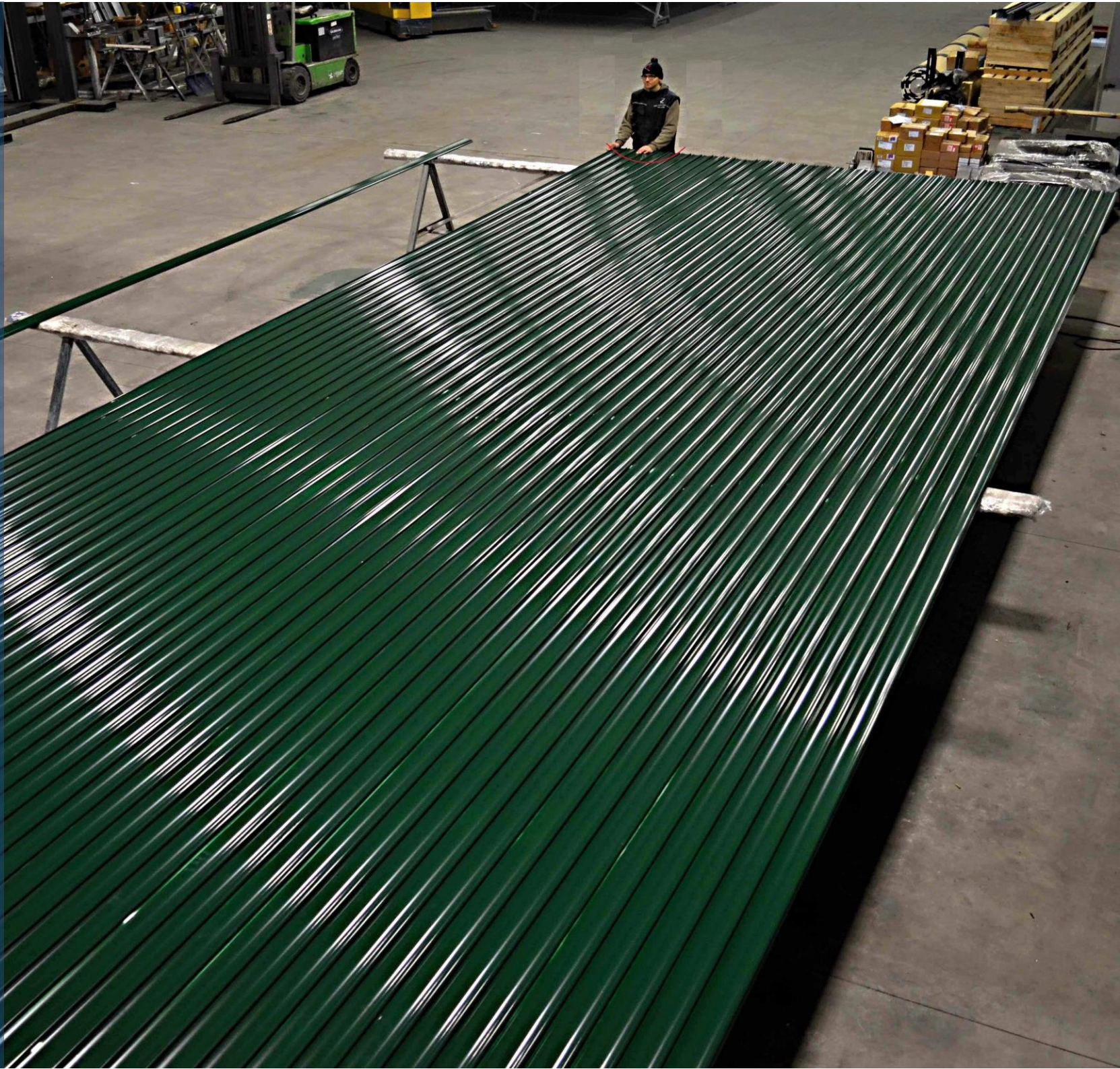
Eolo

The sectional roller insulated door Thermicroll® Eolo is suitable for big industrial vains and designed for an extraordinary wind resistance, in compliance with existing laws.

The particular shape of the curved profile guarantees strength and versatility to the door, with an upper winding reduced size and a silent movement of the mantle.

The simple construction allows to reduce costs, maintenance and installation time, but at the same time enhances quality and durability.

The creations of the insulated doors Thermicroll® are certified as exclusive and original products, unique for strength, practicality, functionality and quality.



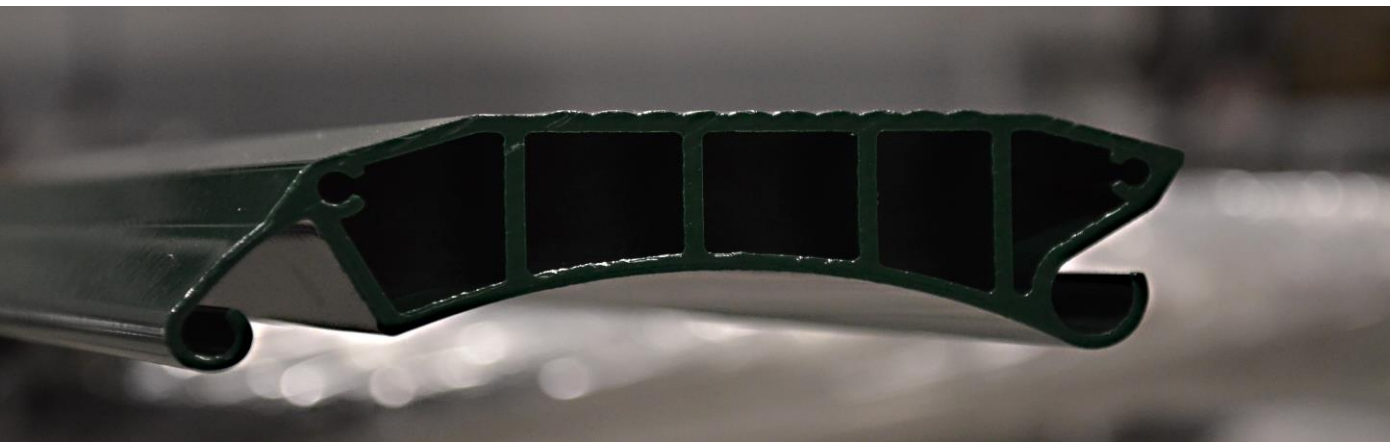
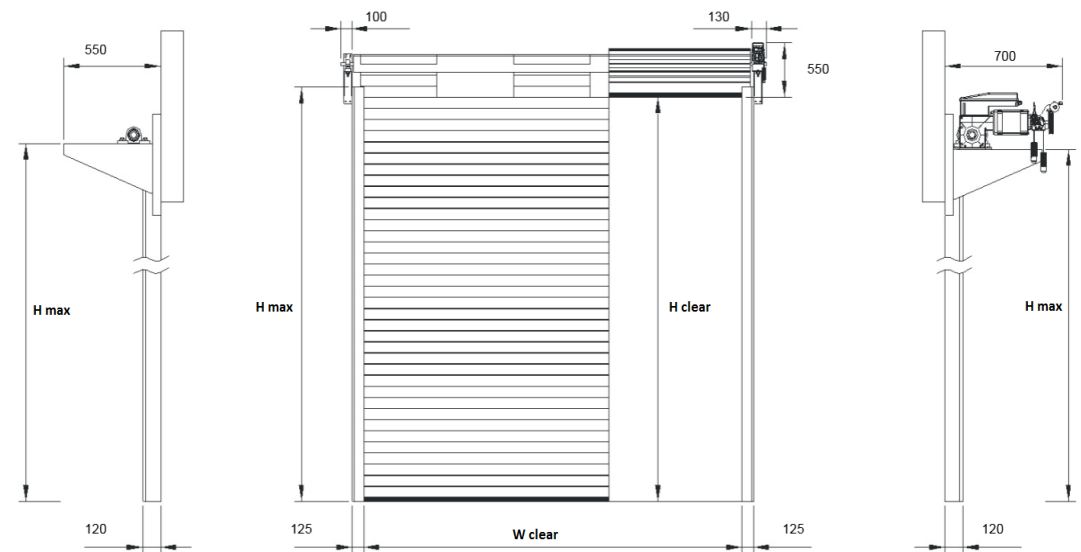
Technical Data Sheet ThermicRoll® Eolo



Mantle	Double-wall profiles Natural aluminium NOT INSULATED Profiles micro profiled outside, inside smooth shell overthrown
Profiles	Thickness = 2 mm Height = 90 mm approx.
Soundproofing coefficient	$R_w = 25$ dB
Thermic coefficient [EN ISO 12567-1]	$U = 5.5$ W/m ² K
Operating temperature	-30°C ÷ +70°C
Opening speed	0.1 m/s
Closing speed	Variable
Wind resistance	W / H 5000 x 6000 mm – class 4 W / H 7000 x 6000 mm – class 3 W / H 12000 x 6000 mm – class 2
Side leads	Galvanized steel
Power supply	400 v
Frequency	50 Hz
Wiring	IP 54
Control Panel	In accordance with standard: EN 13241-1
Emergency crank handle	NO
Safety side [EN 13241]	Anti-crushing sensor (<i>optional</i>)
Manual of use and maintenance and Nameplates	Standard

OPTIONALS

Wire rope anchors	Flashing lights
Magnetic detector	Numeric keypad
Key switch	Light Tower



ROLLTORE SRL

Viale Artigianale, 5
VEZZA D'ALBA (CN)
+39 0173 658242
www.thermicroll.com
info@thermicroll.com